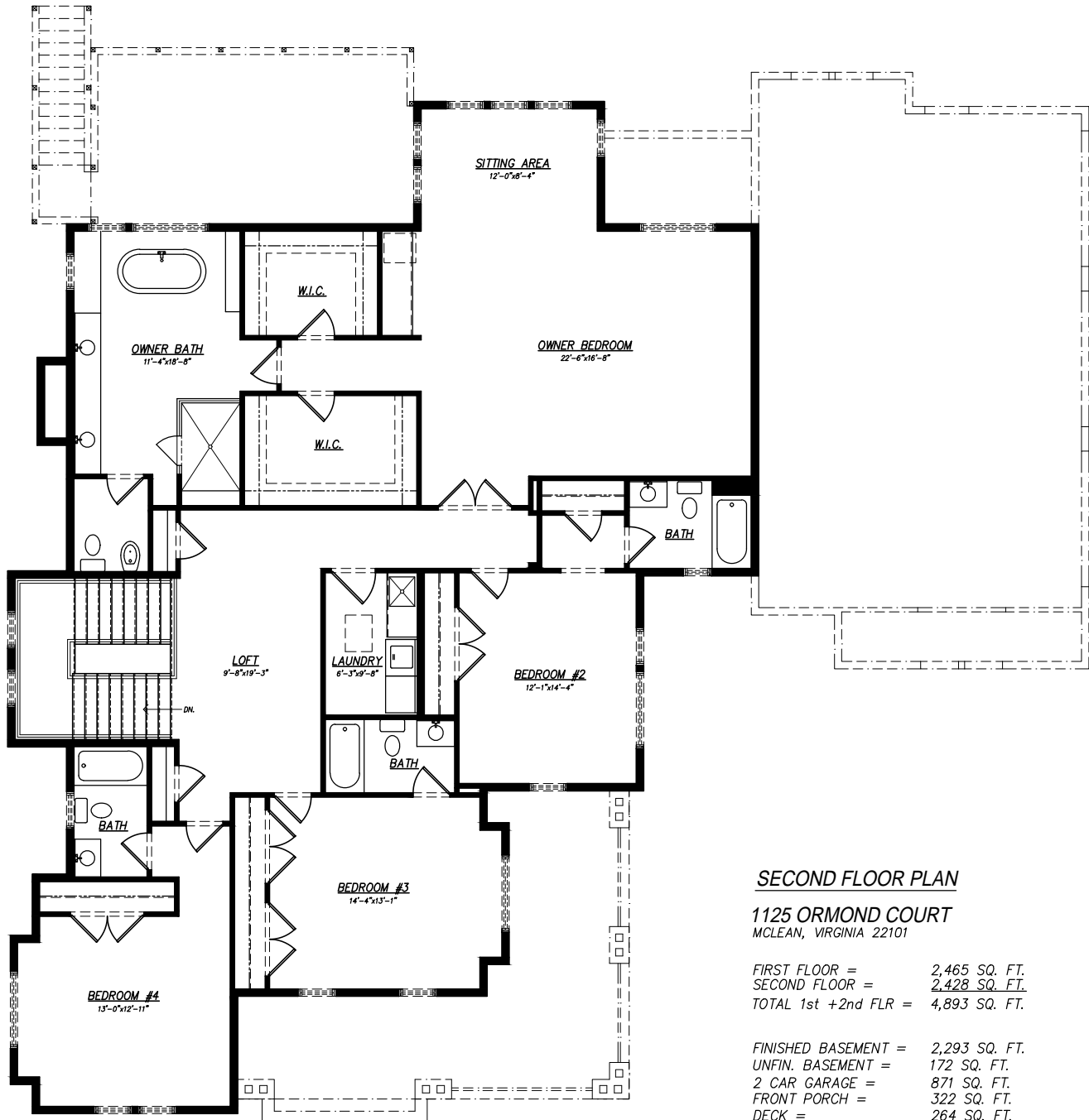


FIRST FLOOR PLAN

1125 ORMOND COURT
 MCLEAN, VIRGINIA 22101

FIRST FLOOR = 2,465 SQ. FT.
 SECOND FLOOR = 2,428 SQ. FT.
 TOTAL 1st +2nd FLR = 4,893 SQ. FT.

FINISHED BASEMENT = 2,293 SQ. FT.
 UNFIN. BASEMENT = 172 SQ. FT.
 2 CAR GARAGE = 871 SQ. FT.
 FRONT PORCH = 322 SQ. FT.
 DECK = 264 SQ. FT.

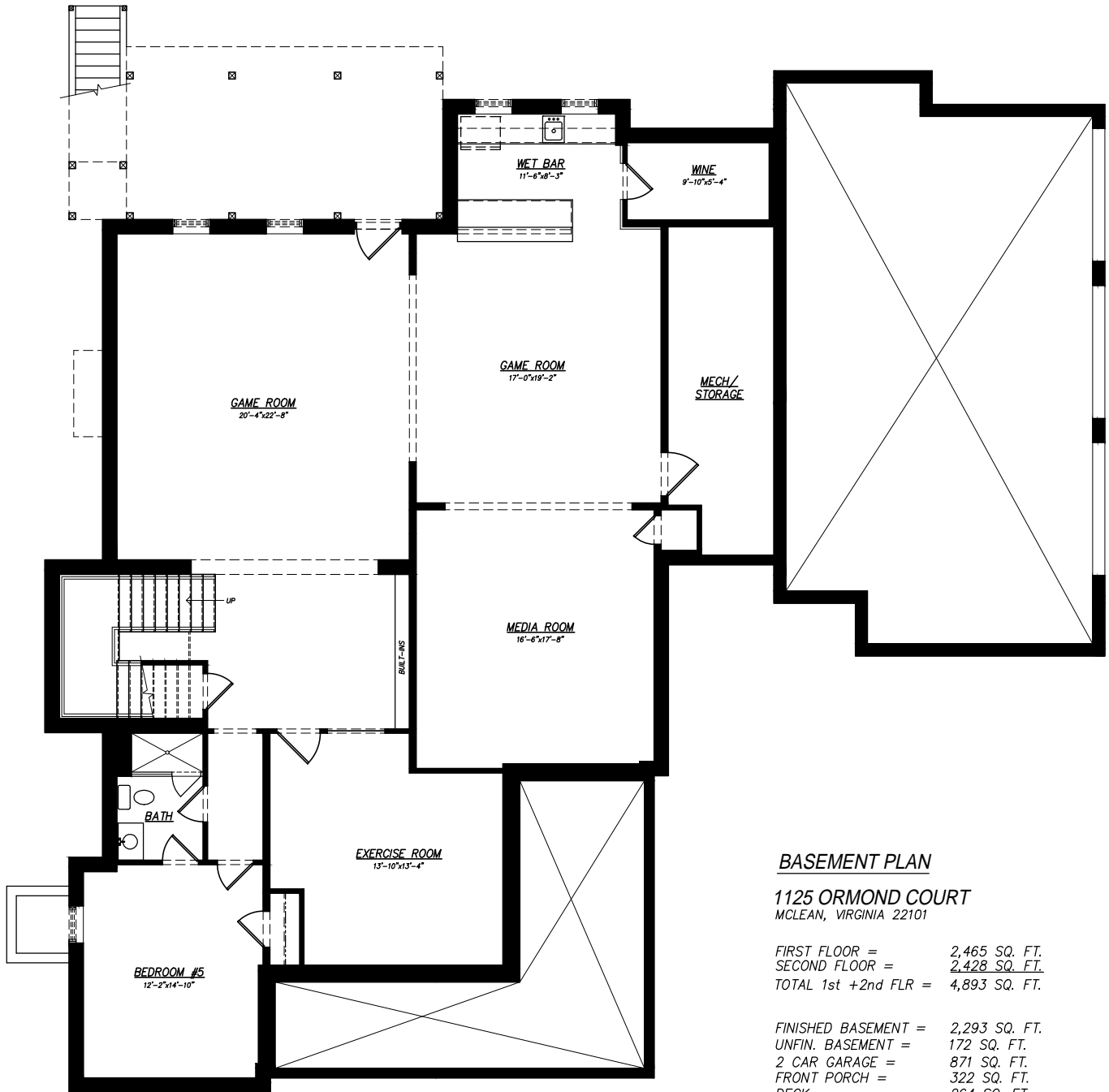


SECOND FLOOR PLAN

1125 ORMOND COURT
 MCLEAN, VIRGINIA 22101

FIRST FLOOR = 2,465 SQ. FT.
 SECOND FLOOR = 2,428 SQ. FT.
 TOTAL 1st +2nd FLR = 4,893 SQ. FT.

FINISHED BASEMENT = 2,293 SQ. FT.
 UNFIN. BASEMENT = 172 SQ. FT.
 2 CAR GARAGE = 871 SQ. FT.
 FRONT PORCH = 322 SQ. FT.
 DECK = 264 SQ. FT.



BASEMENT PLAN

1125 ORMOND COURT
 MCLEAN, VIRGINIA 22101

FIRST FLOOR = 2,465 SQ. FT.
 SECOND FLOOR = 2,428 SQ. FT.
 TOTAL 1st +2nd FLR = 4,893 SQ. FT.

FINISHED BASEMENT = 2,293 SQ. FT.
 UNFIN. BASEMENT = 172 SQ. FT.
 2 CAR GARAGE = 871 SQ. FT.
 FRONT PORCH = 322 SQ. FT.
 DECK = 264 SQ. FT.



FRONT ELEVATION

*1125 ORMOND COURT
MCLEAN, VIRGINIA 22101*



LEFT ELEVATION

*1125 ORMOND COURT
MCLEAN, VIRGINIA 22101*



RIGHT ELEVATION

*1125 ORMOND COURT
MCLEAN, VIRGINIA 22101*



REAR ELEVATION
1125 ORMOND COURT
MCLEAN, VIRGINIA 22101