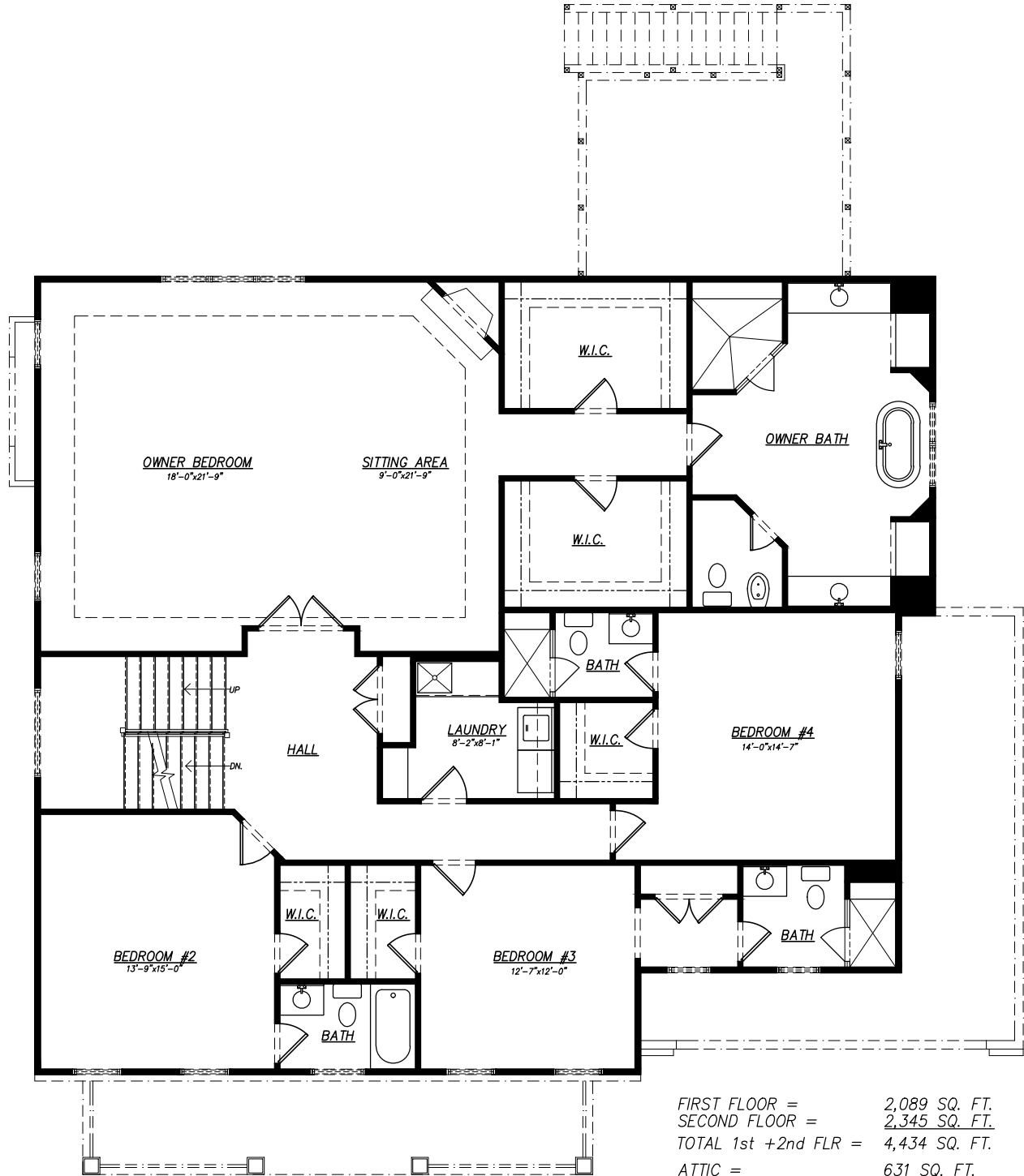


FIRST FLOOR PLAN
3033 JOHN MARSHALL DRIVE
 ARLINGTON, VIRGINIA 22207

FIRST FLOOR = 2,089 SQ. FT.
 SECOND FLOOR = 2,345 SQ. FT.
 TOTAL 1st +2nd FLR = 4,434 SQ. FT.
 ATTIC = 631 SQ. FT.

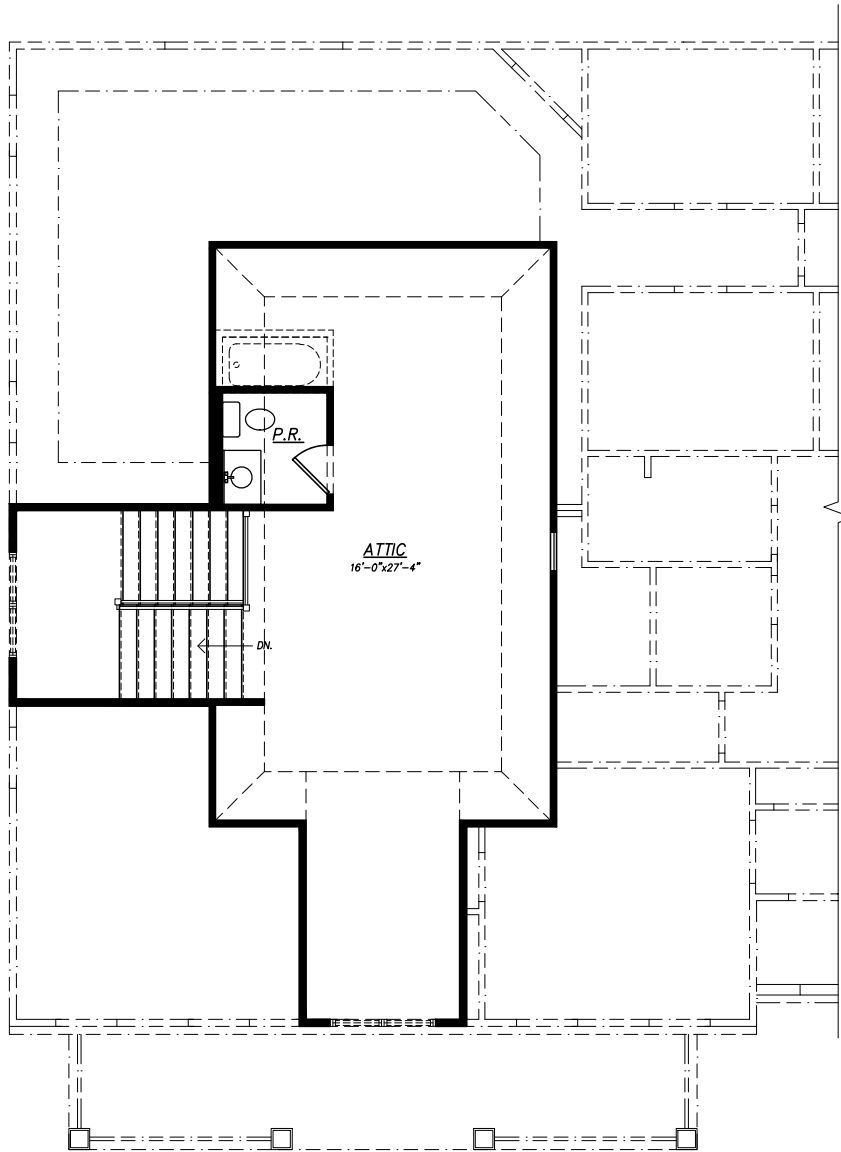
FINISHED BASEMENT = 2,013 SQ. FT.
 UNFIN. BASEMENT = 67 SQ. FT.
 2 CAR GARAGE = 519 SQ. FT.
 FRONT PORCH = 165 SQ. FT.
 DECK = 192 SQ. FT.



SECOND FLOOR PLAN
3033 JOHN MARSHALL DRIVE
 ARLINGTON, VIRGINIA 22207

FIRST FLOOR = 2,089 SQ. FT.
 SECOND FLOOR = 2,345 SQ. FT.
 TOTAL 1st +2nd FLR = 4,434 SQ. FT.
 ATTIC = 631 SQ. FT.

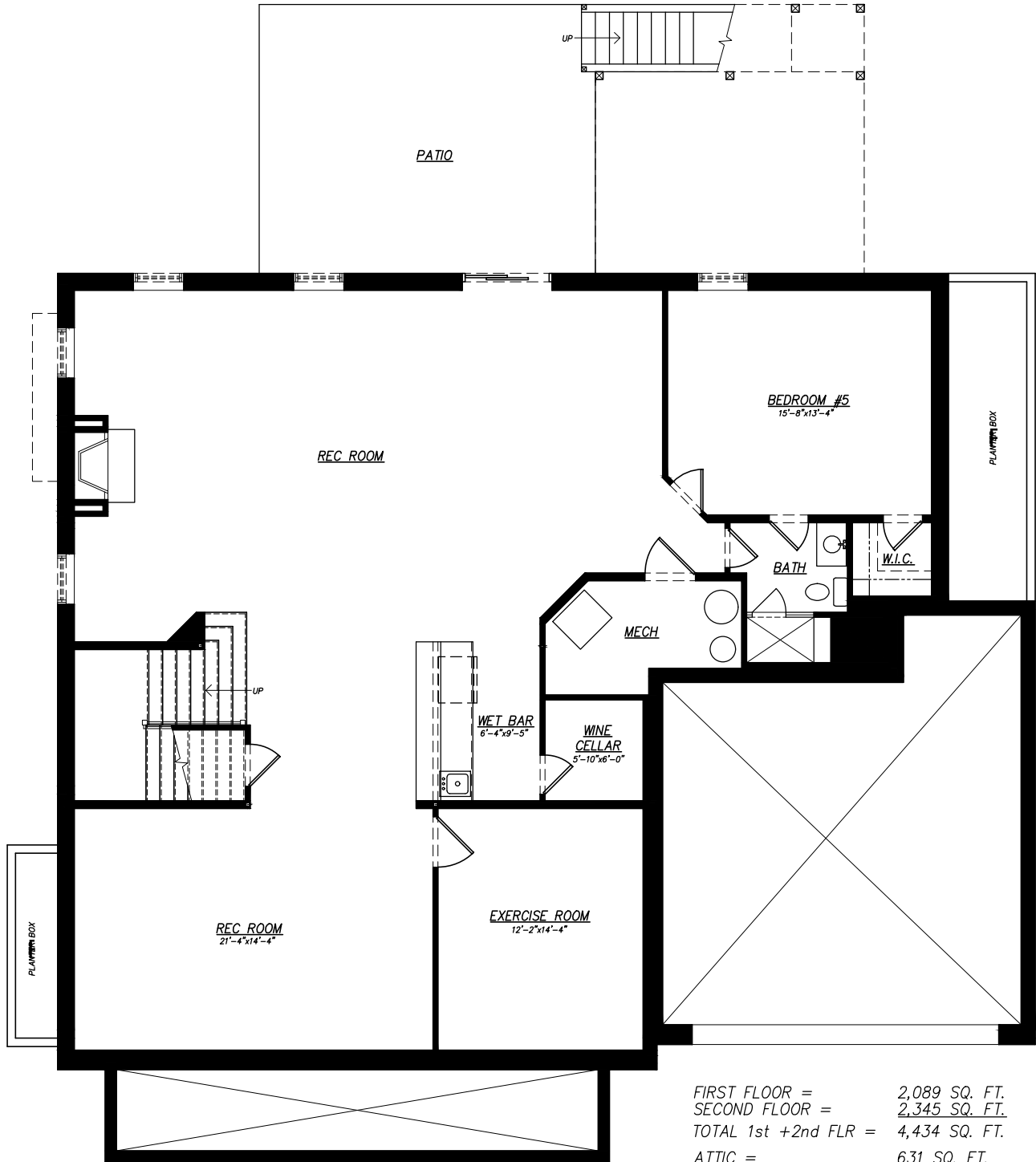
FINISHED BASEMENT = 2,013 SQ. FT.
 UNFIN. BASEMENT = 67 SQ. FT.
 2 CAR GARAGE = 519 SQ. FT.
 FRONT PORCH = 165 SQ. FT.
 DECK = 192 SQ. FT.



ATTIC FLOOR PLAN
3033 JOHN MARSHALL DRIVE
 ARLINGTON, VIRGINIA 22207

FIRST FLOOR = 2,089 SQ. FT.
 SECOND FLOOR = 2,345 SQ. FT.
 TOTAL 1st +2nd FLR = 4,434 SQ. FT.
 ATTIC = 631 SQ. FT.

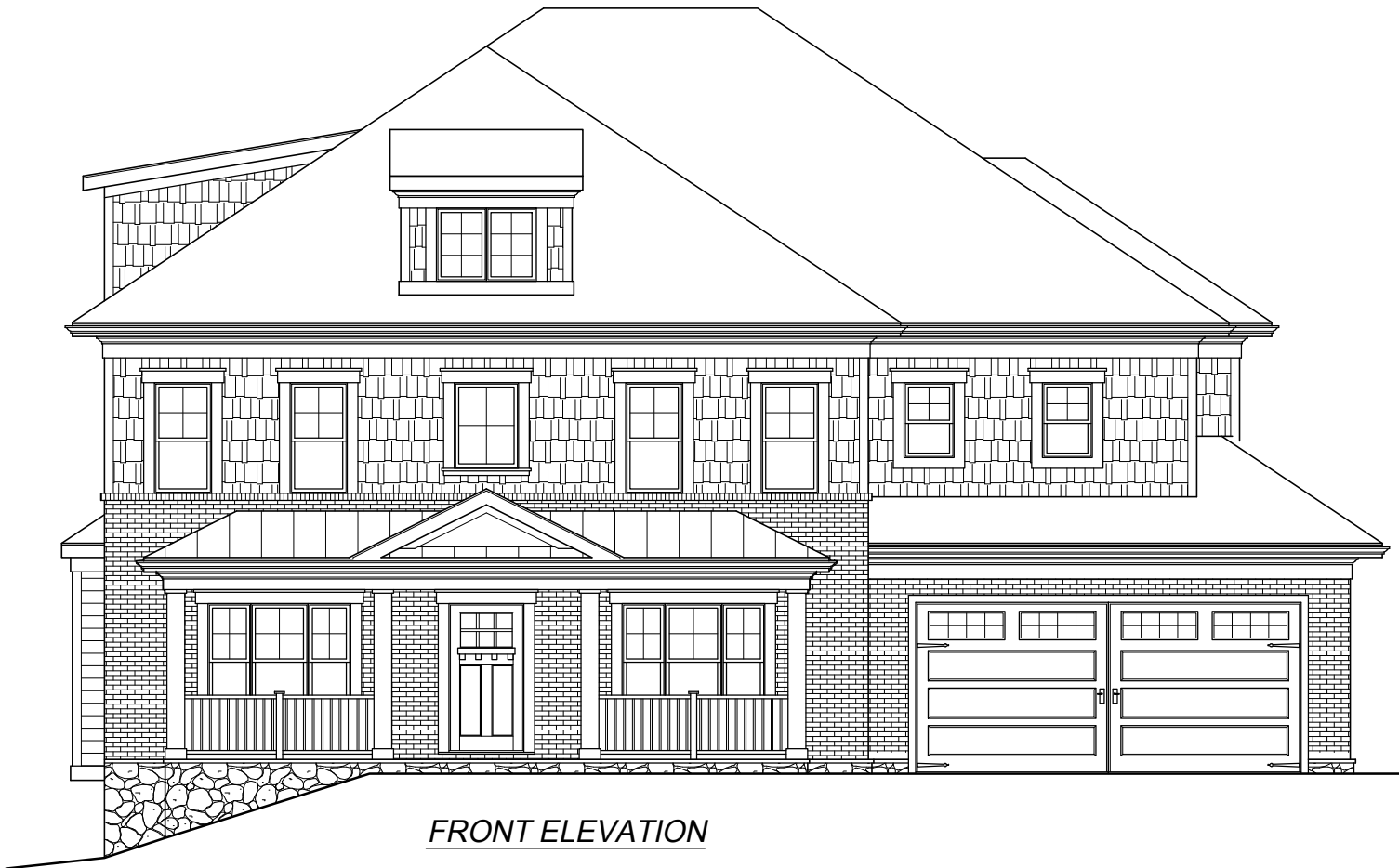
FINISHED BASEMENT = 2,013 SQ. FT.
 UNFIN. BASEMENT = 67 SQ. FT.
 2 CAR GARAGE = 519 SQ. FT.
 FRONT PORCH = 165 SQ. FT.
 DECK = 192 SQ. FT.



BASEMENT PLAN
3033 JOHN MARSHALL DRIVE
 ARLINGTON, VIRGINIA 22207

FIRST FLOOR = 2,089 SQ. FT.
 SECOND FLOOR = 2,345 SQ. FT.
 TOTAL 1st +2nd FLR = 4,434 SQ. FT.
 ATTIC = 631 SQ. FT.

FINISHED BASEMENT = 2,013 SQ. FT.
 UNFIN. BASEMENT = 67 SQ. FT.
 2 CAR GARAGE = 519 SQ. FT.
 FRONT PORCH = 165 SQ. FT.
 DECK = 192 SQ. FT.

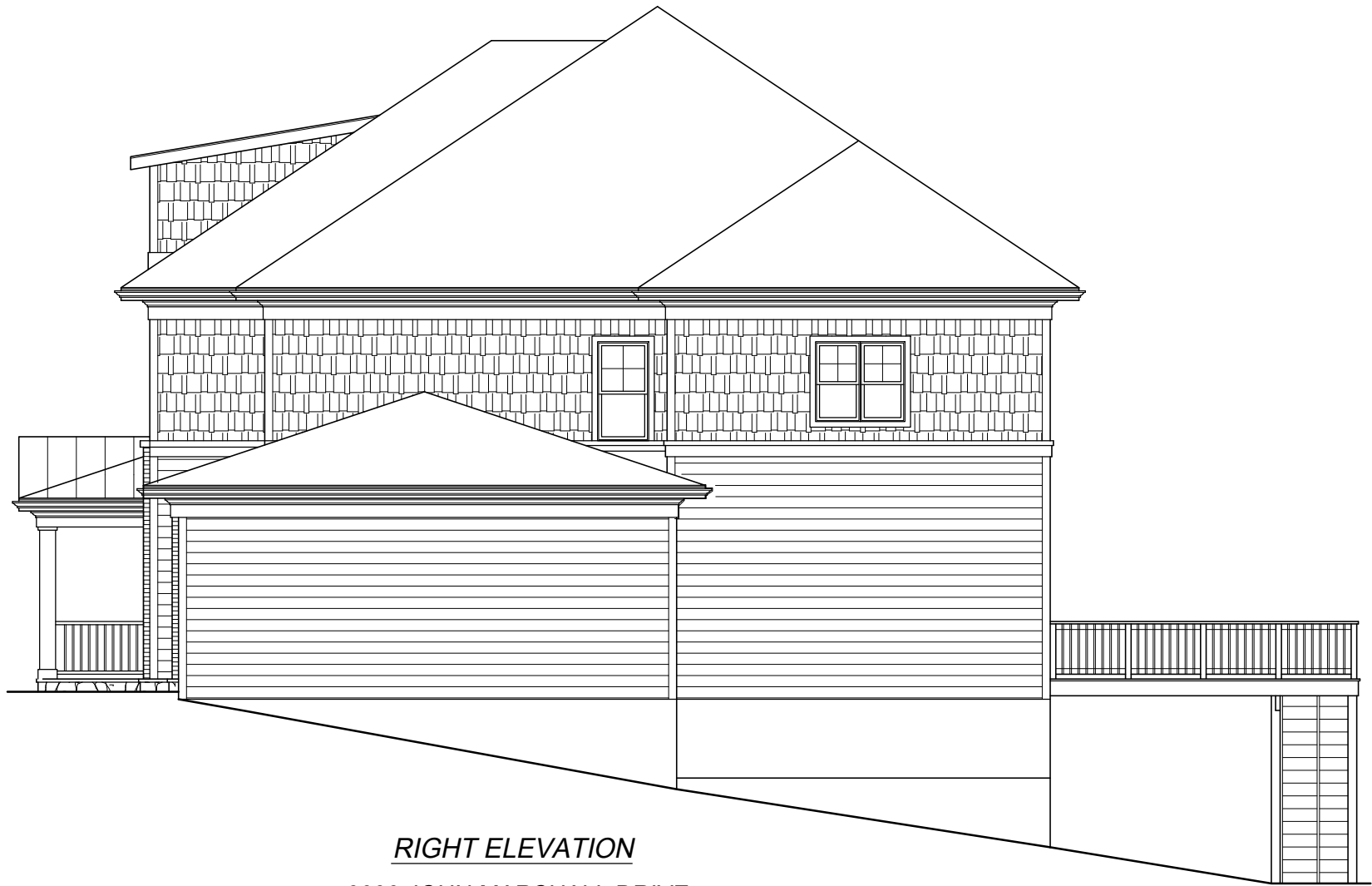


FRONT ELEVATION

3033 JOHN MARSHALL DRIVE
ARLINGTON, VIRGINIA 22207



LEFT ELEVATION
3033 JOHN MARSHALL DRIVE
ARLINGTON, VIRGINIA 22207



RIGHT ELEVATION

3033 JOHN MARSHALL DRIVE
ARLINGTON, VIRGINIA 22207



REAR ELEVATION

3033 JOHN MARSHALL DRIVE
ARLINGTON, VIRGINIA 22207